

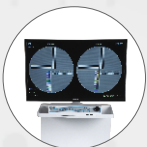


## FLAT PANEL C - ARM

### SURGIX

#### Features

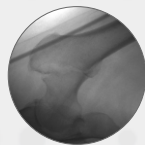
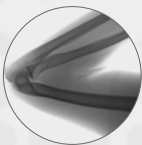
- Ergonomic Design
- High Resolution 1K X 1K
- Smooth Movement
- Actuator Assisted Movement
- PC Based Memory
- Linux Operating System
- Multiple Monitor Option



27" Monitor



Keyboard



RADIOLOGY



MONITORING



ANAESTHESIA



VENTILATION



SURGERY



VETERINARY



MEDICAL GASES



MOBILE HEALTHCARE

## TECHNICAL SPECIFICATIONS:

System Specifications		
Models	Surgix-HD	Surgix-R-HD
Generator Output	3.5KW	6KW
Type	High Frequency 100KHz	
Modes	Continuous Fluoroscopy Mode, Semi-Auto Mode, Auto Mode (ABS), Pediatric Mode, Obese Mode, Boost Fluoroscopy Mode, Pulse Fluoroscopy Mode, Cine Mode, Radiography Mode.	
Fluoroscopy mA Range	0.3 mA to 8 mA	0.3mA to 12mA
Fluoroscopy Timer	300 Secs (5 Minutes) cumulative timer with buzzer and reset function.	
Radiography Parameters KV Range	0.2 to 200mAs, 20mA 40 to 110KV	

Control Panel	
Keyboard	Feather touch keypad with various controls on C-Arm & Alpha Numeric Keyboard on trolley
Digital Display	Large Baclite LCD display, displays operating modes, Parameters & Errors.

X-Ray Tube		
Anode Type	Stationary	Rotating
Focal Spot	0.6mm / 1.5mm	0.3mm / 0.6mm
Anode Heat Storage	30 Kj / 40 KHU	150 Kj / 210 KHU
Collimator	Fixed Cone, Parallel shutter Collimator, IRIS with Rotatable shutter.	

C-Arm Stand	
Focus to I.I. Distance	1000mm
Up-Down Travel	430mm (Motorised)
Horizontal Travel	220mm
Orbital Range	120° (-30° to +90°)
Panning (Wig-wag)	± 12.5°
Rotation Travel	± 270°
Depth of C-Arc	650mm
Free Space II - Tube	800mm
Counter balanced	All movements are self balanced
Steering	2 separate steering for operating front & back wheels. Also act as locking for complete machine at one place
Locking	Manual Locking for Horizontal, Panning & Orbital movements accessible from both side

Flat panel detector	
Panel	Amorphous Silicon
Scintillator	CsI
Effective Area	23cm x 23cm (9" x 9")
Pixel Pitch	154µm
AD Conversion	16 bit
Limiting Resolution	3.2 lp/mm (1x1)
DQE	At 1.0 lp/mm - 65%
Matrix	1536 x 1536
Ingress Protection	IP 30

Image Processing & Storage System	
Image Processor	PC & Software based
Image Processing	At 1K x 1K Matrix, Brightness, Dynamic contrast control, Image Invert, Rotation, Image Orientation – Vert. & Horz. Image, Image Crop & Masking, Recursive filters, DRC, Sharpness, Auto window, Edge Enhancement, Interactive Zoom and Pan, Zoom selection of I.I. from Software & control panel, Dynamic Noise reduction filters (DNF), 32 Bit images storage for Excellent Resolution. Frames Averaging, Quick exploration of stored images, MAG.
APR Selection	Bone, Spine, Soft tissue, Abdomen, Heart, Endo & Uro.
Image Storage	1,00,000+ images inbuilt storage functions, Internal Storage of 10,000+ images in HD format, Fluoro & LIH saving as per user need, Save Study /Images to USB, CD/DVD, Network, Export/save Image in Jpeg.
Cine Loop	Storage of 500 frames (multiple cine loop can be stored Permanently), Variable frame rates of up to 15 frames per seconds, Cine play (Auto and Frame wise), Automatic capture & storage.
DICOM	Connectivity with Dicom workstations/PACS, Dicom Send/storage, Dicom Print, Dicom Work list
Measurements	Stenosis, Length, Angle & Area
Annotations	Rectangle, Ellipse, Line, Text
Print Management	Incorporated
Additional Modes	Digital Subtraction Angiography Mode (Optional)
Monitors	27" Diagnostic grade monitor with split screen: 1 No. <b>Optional</b> Two 19" / One 27" Medical grade monitor with split screen
Standard Accessories	Lead Aprons, UPS with 15 min. back up for software
Accessories (Optional)	Laser Centering Device, Servo Controlled stabilizer, Apron Stand, Thyroid, Gonad, Thermal/Graphix Printer, CD/DVD writer.
Power Supply	Single Phase, 230Volts, 15Amps, 50Hz. With Earthing.
Regulatory/Safety Requirements	Atomic Energy Regulatory Board (AERB), Bureau of Indian Standards (BIS), ISO-9001, ISO-13485, ICMED, CDSCO & EN-60601.

\*Specifications, design and / or accessories listed in the catalogue subject to change without prior notice

MANUFACTURED & SERVICED BY

**MEDION HEALTHCARE PVT. LTD.**

Plot No K-49, Opp. A-Solution Co. & Power House, Thakurpada Gaon, Additional MIDC, Anand Nagar, Ambarnath (E) – 421506. Dist. Thane, Maharashtra, INDIA

**Tel.:** +91-74100 26561 / 62 | **Email:** sales@medion.co.in

**Website:** www.medion.co.in

**MEDI+ON**  
Healthcare

Formerly: Meditronics sales & service Pvt. Ltd.

REPRESENTED BY:

