

Humanized switchable gel warmer option



Customizable touch screen user panel to personalize your workflow



Five active transducer ports so the transducer you need is always ready to use



Integrated user interface with 180° rotation and electronic height adjustment



Transducers

<p>C6-2M0</p>  <p>2 - 6 MHz 3D/4D Mechanical Curved Array</p>	<p>L12-5Q</p>  <p>5 - 12 MHz Linear Array</p>	<p>MC8-4Q</p>  <p>4 - 8 MHz Micro Convex Array</p>	<p>MC9-3TQ</p>  <p>3 - 9 MHz Micro Convex Array</p>
<p>L17-7HQ</p>  <p>7 - 17 MHz High Frequency Linear Array</p>	<p>L17-7SQ</p>  <p>7 - 17 MHz High Frequency Compact Linear Array</p>	<p>C5-2Q</p>  <p>2 - 5 MHz Curved Array</p>	<p>C5-1Q</p>  <p>1 - 5 MHz Single Crystal Curved Array</p>
<p>P5-1Q</p>  <p>1 - 5 MHz Phased Array</p>	<p>P7-3Q</p>  <p>3 - 7 MHz Phased Array</p>	<p>E10-3BQ</p>  <p>3 - 10 MHz Endocavity Curved Array (200°)</p>	<p>E10-3HQ</p>  <p>3 - 10 MHz Endocavity Curved Array (200°)</p>

Empowering Definitive Diagnosis

Acclarix[®] LX9
Diagnostic Ultrasound System



A Clear Vision

Ultrasound reimagined

Born of a vision to deliver meaningful design innovations that benefit the user, the Acclarix LX9 features a host of design breakthroughs that make day-to-day operation in general diagnostic environment easy, fast and intuitive.



Global Headquarters:
Edan Instruments, Inc. | No.15 Jinhui Rd., Jinsha Community,
Kengzi Subdistrict, Pingshan District, Shenzhen | 518122 P.R. China
+86.755.26898326 | www.edan.com | info@edan.com.cn
U.S. and Canada inquiries:
EDAN Diagnostics, Inc. | 9918 Via Pajar, San Diego, CA 92126
+1.858.750.3066 | www.edandiagnostics.com | edan-info@edandiagnostics.com

© Edan Instruments, Inc. All rights reserved. Features and specifications are subject to change without prior notice. No reproduction, copy or transmission may be made without written permission. Not all products or features are available in all countries, contact Edan for local availability.

ENG-US-LX9-V0.3-20191105





Fetal Face



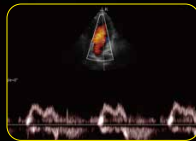
Left Ventricle



Hepatic Flow



Umbilical Artery & Vein



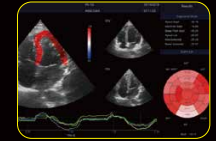
Mitral Valve Regurgitation



Elastography Image- Thyroid Cyst



eLV
Auto EF



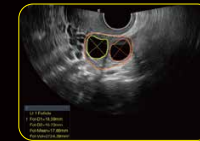
eLV
Auto SG & Strain



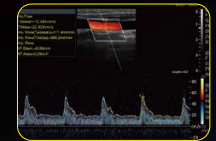
eOB
Auto BPD



eOB
Auto FL



eFollicle



eVol.Flow

Elegant Fusion of Specialty and Flexibility

When referring to performance, renovation and multiformity - there is one ultrasound system that delivers more. Developed specifically to address the challenges of complex ultrasound environments, the Acclarix™ LX9 Diagnostic Ultrasound System aims to provide precise diagnosis in versatile clinic application with uncompromising image quality, brilliant workflow and user-friendly operation.

- 21.5 inch high resolution LCD medical monitor
- 14 inch sensitive touch screen releasing efficient operation at fingertip
- Integrated user interface with 180° rotation and electronic height adjustment
- Extra-long continuous scanning time owing to two built-in batteries

Stunning Clarity

Definitive image quality

As the most high-end level system from Edan, Acclarix LX9 offering stunning image quality and reliable functional workflow to satisfy GI doctors' need on daily scanning and diagnosis, which can be installed in any departments you want for sonography.

- High fidelity, high-channel count architecture results in superb detail resolution, particularly at depth
- Tissue Adaptive Imaging (TAI) continuously and automatically optimizes imaging allowing more focus on the patient
 - In B-mode, TAI fine tunes multiple parameters to provide the best possible image quality
 - In Doppler, TAI automatically adjusts for flow state providing improved continuity, border detection and fill-in

Automatic Tools for Stronger Capabilities

Acclarix technology is the result of Silicon Valley innovation and engineering excellence combined with Chinese design and manufacturing proficiency. The Acclarix LX9 features advanced artificial intelligent technologies, integrated with mighty hardware platform, delivers unexpected value and performance across a broad range of applications:

- | | | |
|----------------------|---------------------|---------------|
| • Abdomen | • Cardiac Screening | • Small Parts |
| • OB/GYN | • Vascular | • MSK |
| • Difficult-to-Image | • Breast | • Nerve |