

Sleek compact design for portable exam environments



Tilt-and-swivel monitor for optimal viewing during procedures



Customizable control panel to personalize your user interface



Dual touch screens streamline exam workflow



# A Clear Vision

## Ultrasound reimaged

Born of a vision to deliver meaningful design innovations that benefit the user, the Acclarix AX8 features a host of design breakthroughs that make day-to-day operation easy, fast and intuitive. The result is an elegant simplicity where form and function meet at the tips of your fingers.

- Unparalleled image quality with one-key optimization for all exams and all modes
- Innovative gesture control user interface sets a new standard in workflow
- Tilt-and-swivel, HD monitor for optimal viewing
- Completely sealed control panel to aid in maintaining infection control

## Transducers

<p><b>C5-2Q</b></p>  <p>2 - 5 MHz Curved Linear Array</p>	<p><b>C5-2MQ</b></p>  <p>2 - 5 MHz 3D/4D Mechanical Curved Array</p>	<p><b>MC8-4Q</b></p>  <p>4 - 8 MHz Micro Convex Array</p>	<p><b>E8-4Q</b></p>  <p>4 - 8 MHz Endocavity Curved Array</p>
<p><b>L17-7HQ</b></p>  <p>7 - 17 MHz High Frequency Linear Array</p>	<p><b>L12-5Q</b></p>  <p>5 - 12 MHz Linear Array</p>	<p><b>L17-7SQ</b></p>  <p>7 - 17 MHz High Frequency Compact Linear Array</p>	<p><b>P5-1XQ</b></p>  <p>1 - 5 MHz Phased Array</p>
<p><b>P5-1Q</b></p>  <p>1 - 5 MHz Phased Array</p>	<p><b>P7-3Q</b></p>  <p>3 - 7 MHz Phased Array</p>	<p><b>MC9-3TQ</b></p>  <p>3 - 9 MHz Micro Convex Array</p>	

# General Imaging Ultrasound in a Whole New Light.

**Acclarix AX8**  
Compact Ultrasound System



GESTURE-CONTROL USER INTERFACE

APPLICATION-BASED WORKFLOW

USER-FOCUSED DESIGN

UNPARALLELED VALUE

DEFINITIVE IMAGE QUALITY



**U.S. inquiries:**  
Edan Diagnostics, Inc. | 9833 Pacific Heights Blvd., Suite E/F  
San Diego, CA 92121-4707 | +1.858.750.3066  
www.edandiagnosics.com | edan-info@edandiagnosics.com

**Inquiries outside of the U.S.:**  
Edan Instruments, Inc. | No.15 Jinhui Rd., Jinsha Community,  
Kengzi Subdistrict, Pingshan District, Shenzhen | 518067 P.R. China  
+86.755.26898326 | www.edan.com.cn | info@edan.com.cn



© 2018 Edan Instruments, Inc. All rights reserved. Features and specifications are subject to change without prior notice. No reproduction, copy or transmission may be made without written permission. Not all products or features are available in all countries, contact Edan for local availability.







# It's a Tour de Force

## Redefining innovation through value and performance

It's the dawning of a new day in the world of compact ultrasound—and it turns out you really can have it all. The remarkable Acclarix™ AX8 Compact Ultrasound System delivers a powerhouse combination of features in a remarkably small package—making it the ideal choice for tight environments. The Acclarix AX8 has been designed from the ground up with a relentless focus on delivering unexpected levels of innovation and performance at a price point that is equally surprising.

- Definitive Imaging
- Intelligent Workflow
- Distinctive Design
- Intrinsic Quality

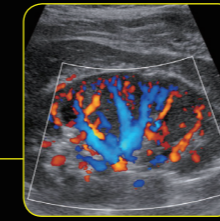
# Stunning Clarity

## Definitive image quality

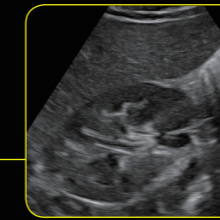
Sleek design and user-friendly features are just part of the story. The Acclarix AX8 is also designed to deliver amazing clarity and stunning image quality quickly—eliminating the need to tweak imaging controls.

- High fidelity, high-channel count architecture results in superb detail resolution, particularly at depth
- Tissue Adaptive Imaging (TAI) continuously and automatically optimizes imaging allowing more focus on the patient
  - In B-mode, TAI fine tunes multiple parameters to provide the best possible image quality
  - In Doppler, TAI automatically adjusts for flow state providing improved continuity, border detection and fill-in

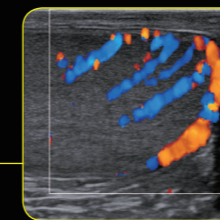
Tissue Adaptive Imaging for Doppler enhances color flow sensitivity, spatial resolution and vessel continuity to capture the small peripheral vessels of the kidney.



Tissue Adaptive Imaging provides exquisite contrast and detail resolution to clearly evaluate the liver and kidney in this 8 year-old child.



The versatile, L12-5Q transducer provides excellent near field clarity and uniformity as demonstrated here in this normal testicle.



3D/4D imaging with the C5-2MQ transducer provides exceptional results for fetal face application



Concept + Design

Silicon Valley  
USA

Design + Manufacture

Shenzhen  
China

# The Virtue of Value

How can Edan deliver so much innovation AND so much value? By capitalizing on the experience and expertise of a truly global enterprise. Acclarix technology is the result of Silicon Valley innovation and engineering excellence combined with Chinese design and manufacturing proficiency. The Acclarix AX8 delivers unmatched value and performance across a broad range of applications.

- Abdomen
- Difficult-to-Image
- OB/GYN
- Small Parts
- Breast
- Nerve
- Musculoskeletal
- Intraoperative
- Prostate
- Vascular
- Cardiac Screening